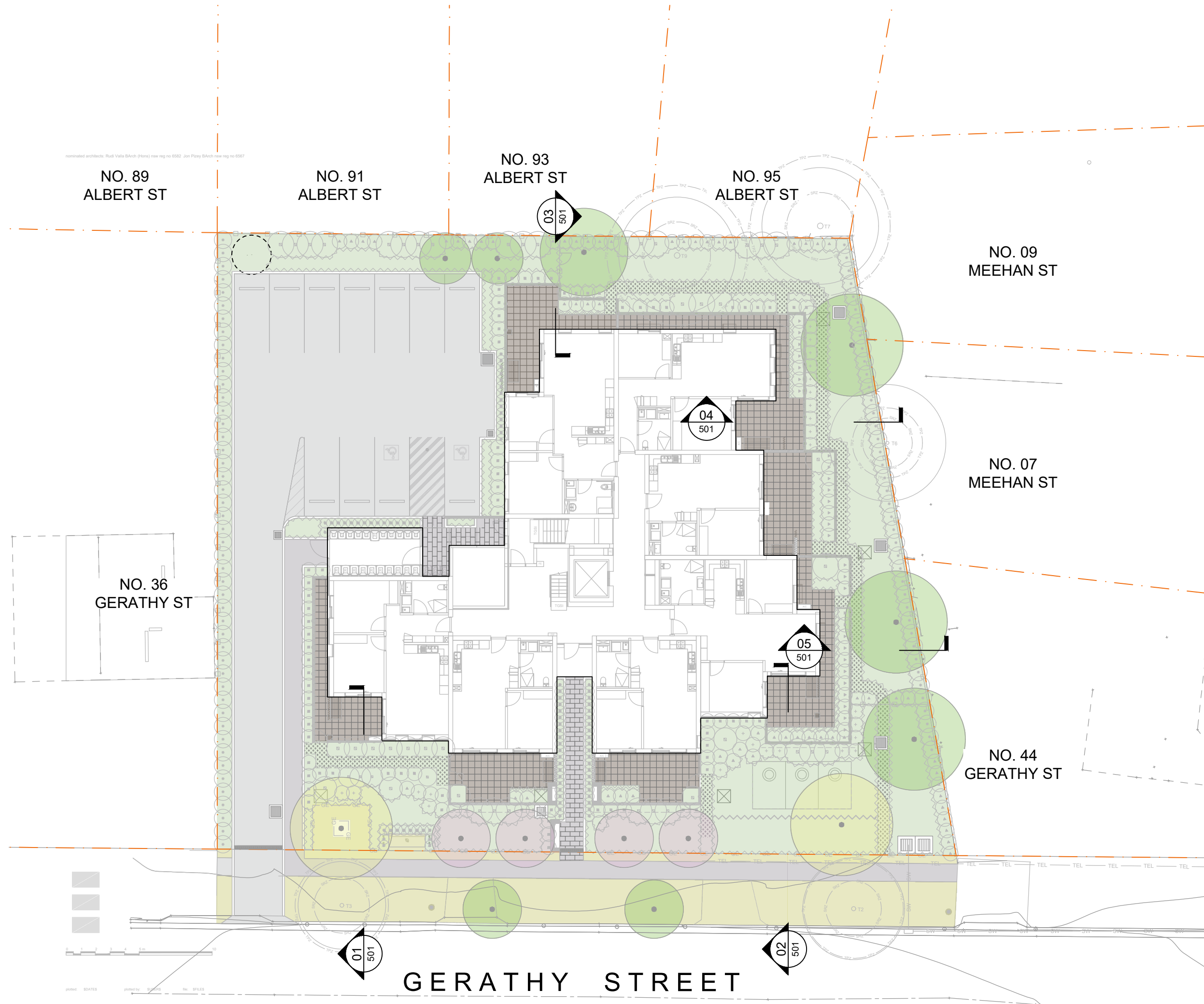


# 38-42 Gerathy Street, Goulburn NSW 2580

## LANDSCAPE DOCUMENTATION SET FOR DA



### DRAWING LIST

LA-000	COVER SHEET & GENERAL NOTE
LA-001	LEGEND & PLANTING SCHEDULE
LA-002	EXISTING TREE PLAN
LA-201	GENERAL ARRANGEMENT PLAN
LA-301	PLANTING PLAN
LA-501	TYPICAL DETAILS
LA-601	LANDSCAPE SECTIONS
LA-700	SPECIFICATION NOTES

### GENERAL NOTES

- REFER TO ARCHITECT'S DRAWINGS FOR ALL INTERNAL BUILDING LAYOUT & LEVELS.
- REFER TO ARCHITECT'S DRAWING FOR EXTERNAL FOOTPATH, RAMPS, KERB RAMPS, AND LETTER BOX DETAILS.
- REFER TO CIVIL ENGINEER'S DRAWINGS FOR ALL MAJOR RETAINING WALLS, SEWER LINES, MANHOLES, DRAINAGE PITS, KERBS & GUTTER, AND VEHICULAR CROSSOVERS.
- REFER TO CIVIL ENGINEER'S DRAWINGS FOR ALL PROPOSED FOOTPATHS IN THE ROAD RESERVE ALIGNMENT AND LEVELS.
- REFER TO CIVIL ENGINEER'S DRAWINGS FOR ALL PAVEMENT JOINTS, PAVEMENT SUBSTRATE DETAILS.
- REFER TO CIVIL ENGINEER'S DRAWINGS FOR ALL SUBSOIL DRAIN DESIGN, LOCATION, AND CONNECTION.
- THIS DOCUMENTATION SET SHALL BE READ IN CONJUNCTION WITH ARCHITECT'S, CIVIL, STORMWATER, AND STRUCTURAL ENGINEER'S DRAWINGS.
- LOCATE AND PROTECT ALL UNDERGROUND SERVICES PRIOR TO ANY EXCAVATION. PROPOSED TREES TO BE LOCATED MINIMUM 6M FROM ANY EXISTING SEWER LINES, ALL UNDERGROUND SERVICES TO BE LOCATED AND PROTECTED PRIOR TO ANY EXCAVATION AND INSTALLATION OF TREES.
- ANY DISCREPANCIES MUST BE REPORTED IMMEDIATELY TO THE SUPERINTENDENT FOR APPROVAL PRIOR TO COMMENCEMENT OF WORKS.
- DO NOT SCALE DRAWINGS, FIGURED DIMENSIONS HAVE PREFERENCE OVER SCALED DIMENSIONS.
- CONTRACTOR TO CHECK EXISTING LEVELS ALONG SITE BOUNDARY TO CONFIRM EXTENT AND HEIGHT OF PROPOSED RETAINING WALLS. OBTAIN APPROVAL FROM SUPERINTENDENT AND PROJECT LANDSCAPE ARCHITECT PRIOR TO COMMENCEMENT OF CONSTRUCTION.
- THIS DRAWING SET IS TO BE PRINTED IN COLOUR.
- HANDRAILS, SAFETY BALUSTRADES, AND TGSIS (WHERE NEEDED) TO BE INSTALLED WHERE REQUIRED FOR ALL EXTERNAL RAMPS, STAIRS, ETC TO COMPLY WITH BCA AND AS 1428.1-2009.
- QUALIFIED IRRIGATION CONSULTANT TO PROVIDE DETAILED IRRIGATION DESIGN AND DOCUMENTATION FOR APPROVAL. IRRIGATION TO BE PROVIDED TO ALL PROPOSED GARDEN BED, AND TURF AREAS.
- DIMENSIONS ARE IN MILLIMETERS LEVELS SHOWN ARE IN METERS DO NOT SCALE ANY DRAWINGS.

#### IRRIGATION

TREES AND PLANTING BEDS IN FEATURE LANDSCAPE AREAS ARE TO BE IRRIGATED BY AN AUTOMATICALLY CONTROLLED DRIP IRRIGATION SYSTEM, OR APPROVED SIMILAR.

THE IRRIGATION SYSTEM IS TO BE ADJUSTED TO SUIT THE FOLLOWING:

- THE WATER REQUIREMENTS OF PLANT TYPES.
- THE INFILTRATION RATE OF THE SOIL AS WELL AS SEASONS, EXPOSURE, TOPOGRAPHY AND ANY LOCAL AUTHORITY RESTRICTIONS.
- ADJUSTMENT OR SHUT DOWN DURING AND AFTER PERIODS OF PROLONGED HEAVY RAIN

#### PLANTING ESTABLISHMENT AND MAINTENANCE PERIOD

THE GENERAL APPEARANCE AND PRESENTATION OF THE LANDSCAPE AND THE QUALITY OF PLANT MATERIAL AT THE DATE OF PRACTICAL COMPLETION IS TO BE MAINTAINED FOR THE PLANTING ESTABLISHMENT PERIOD.

LANDSCAPE MAINTENANCE IS TO BE UNDERTAKEN FOR A PERIOD OF 52 WEEKS FROM THE DATE OF PRACTICAL COMPLETION DURING WHICH TIME THE CONTRACT AREAS ARE TO BE MAINTAINED AND ANY DEFECTS,

WHICH BECOME APPARENT, ARE TO BE RECTIFIED. WORK IS TO INCLUDE BUT SHALL NOT BE LIMITED TO:

- WEEDING: WEEDS ARE TO BE REMOVED FROM LAWN, GARDEN BED AREAS AND PAVEMENT BY HAND OR ENVIRONMENTALLY ACCEPTABLE CHEMICAL APPLICATION.
- FERTILISING: APPROVED FERTILISER IS TO BE APPLIED IN ACCORDANCE WITH PLANT TYPE AND SEASONAL GROWTH REQUIREMENTS.
- PRUNING: PRUNING WORKS ARE TO BE CARRIED OUT TO ENHANCE PLANT VIGOUR, MAINTAIN DENSE FOLIAGE AND REMOVE SAFETY HAZARDS OR DEAD AND DAMAGED MATERIAL. MAJOR TREE PRUNING OR LOPPING IS TO BE CARRIED OUT BY A SUITABLY QUALIFIED TREE SURGEON/ARBORIST.
- STAKES AND TIES: TREE STAKES AND TIES ARE TO BE ADJUSTED AND REPLACED AS REQUIRED AND REMOVED WHEN THE PLANT HAS ACHIEVED A STABLE CONDITION.
- INSECT AND DISEASE CONTROL: PESTS AND DISEASES THAT MAY AFFECT THE PLANTS ARE TO BE CONTROLLED BY NATURAL OR APPROVED CHEMICAL METHOD.
- MOVING: AS REQUIRED DEPENDING ON SEASONAL CONDITIONS AND TURF HEIGHT.
- PLANT REPLACEMENT: FAILED, DEAD OR DAMAGED PLANTS ARE TO BE REPLACED WITH PLANTS OF THE SAME SPECIES AND SIZE.
- WASTE REMOVAL: NO WASTE IS TO BE LEFT ON SITE. WASTE IS TO BE DISPOSED AT A DESIGNATED WASTE REMOVAL SITE.
- EXISTING PLANTING AND GRASS: EXISTING GRASS AND PLANTING WITHIN THE LANDSCAPE CONTRACT AREA IS TO BE MAINTAINED IN THE SAME WAY AS NEW GRASS OR PLANTING.
- HARDWORKS: LEAVES, MULCH AND ORGANIC DEBRIS ARE TO BE REMOVED FROM PAVEMENT AND DRAINS. ANY DEFECTIVE PAVEMENTS ARE TO BE MADE GOOD.
- IRRIGATION: ALL COMPONENTS ARE TO BE CHECKED FOR PROPER OPERATION. DAMAGED COMPONENTS ARE TO BE REPAIRED OR REPLACED WITH PARTS FROM THE SAME MANUFACTURER. DIRT OR FOREIGN MATTER ARE TO BE FLUSHED FROM THE SYSTEM AND ANY BLOCKAGES CLEARED.

#### NOTE

Copyright of Studio IZ Pty Ltd.  
Figured dimensions shall be taken in preference to scaling.  
The contractor shall check all dimensions on site before commencing work.

- Do not scale drawings, figured dimensions have preference over scaled dimensions. The contractor shall check all dimensions on site before commencing work.
- Any discrepancies must be reported immediately to the superintendent and project landscape architect for clarification and approval.
- All existing trees shown as retained to be protected as per arborist report and landscape specification.
- Refer to architect's drawings for final internal footprint, FFL of the proposed building.
- Refer to stormwater engineer's drawings for final location of OSD tanks, rainwater tanks, grate drain and pits, proposed crossfall and driveway levels.
- Locate and protect all underground services prior to any excavation.
- The drawing has been prepared by qualified landscape architect at Studio IZ Pty Ltd Kate Gong AILA #12247

C	18/03/2025	ISSUE FOR PART 5 DA
B	03/03/2025	ISSUE FOR PART 5 DA
A	29/02/2025	ISSUE FOR PART 5 DA
REV	DATE	DESCRIPTION

### PRELIMINARY NOT FOR TENDER OR CONSTRUCTION

#### PROJECT:

38-42 Gerathy Street, Goulburn  
NSW 2580

#### ARCHITECT:

DEM

#### CLIENT:



Homes NSW

4 Parramatta Square (4PSQ)

12 Darcy Street, Parramatta NSW 2150

#### PROJECT CONTACT

## STUDIO IZ

STUDIO IZ PTY LTD ABN: 20 611 333 521  
TEL: +61 02 8004 6946 EMAIL: info@studioiz.com.au  
Clarend Towers, Suite 806, Level 8, Tower B/799 Pacific Hwy,  
Chateau NSW 2067

APPROVED	DRAWN
KG	BW
DATE CREATED	PROJECT NO.
November 2024	LA241016

#### DRAWING TITLE

### COVER SHEET & GENERAL NOTE

SCALE	NORTH POINT
A1	NTS

DRAWING NO.	ISSUE
LA-000	C



LEGEND

GENERAL

SITE BOUNDARY

LINE OF ROOF ABOVE

76.00

EXISTING CONTOUR

refer to survey

FALL  
1:21 MAX

PROPOSED GRADING

+ [676.06]

EXISTING LEVEL

+ 676.40

PROPOSED SPOT LEVEL

+ TW676.40

PROPOSED TOP OF WALL LEVEL

SERVICES (by others)

W

W

W

W

W

WATER

refer to survey

S

S

S

S

S

SEWER

refer to survey & peg out

GAS

GAS

GAS

GAS

GAS

GAS

refer to survey

E

E

E

E

E

ELECTRICITY

refer to survey

SW

SW

SW

SW

SW

STORMWATER

refer to stormwater engineer's drawings

TEL

TEL

TEL

TEL

TEL

TELECOMMUNICATION

refer to survey

LP

PP

S

SIGNAGE & POLES

existing road signage, light poles, and power poles refer to public domain drawings.

COMBINED TANK

COMBINED TANK

refer to stormwater engineer's drawings

STORMWATER PIT & GRATE DRAIN

STORMWATER PIT & GRATE DRAIN

refer to stormwater engineer's drawings

PIT

PIT

by others

SOFTWORKS

O T1

EXISTING TREES

to be removed

O T1

EXISTING TREES

to be retained & protected

TPZ / SRZ refer to arborist's report

PROPOSED TREES

refer to planting plan & schedule

PROPOSED SRHUBS

refer to planting plan & schedule

GB

PROPOSED GROUNDCOVERS

refer to planting plan & schedule

GB

GARDEN BED

as detailed and specified

TU

PROPOSED TURF

as detailed and specified

MU

MULCH

as detailed and specified

SURFACE & FINISHES

CON

CONCRETE DRIVEWAY

design levels & extent by others

P1

PAVING TYPE 1

Concrete Unit Pavers at bld entrance, pedestrian path and ramps

P2

PAVING TYPE 2

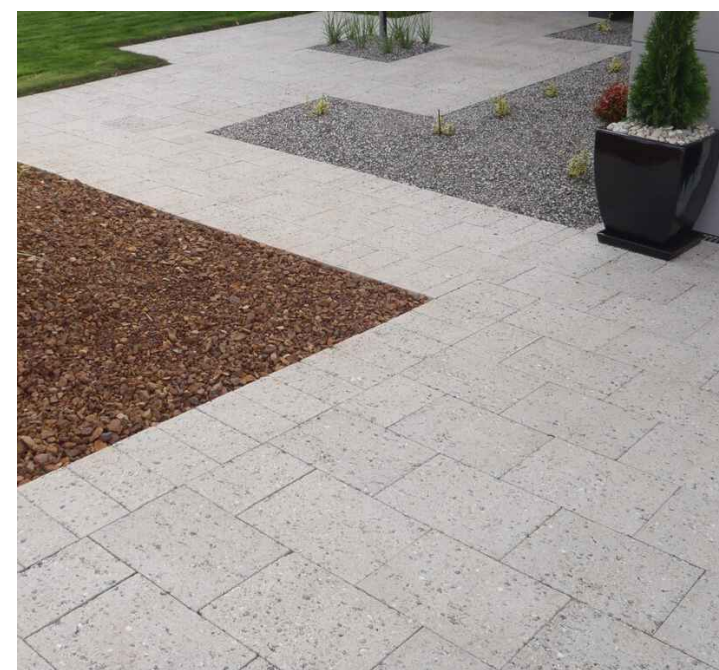
unit paving at P.O.S. refer to architect's specification

PLANTING SCHEDULE

ID	BOTANICAL NAME	COMMON NAME	INDIGENOUS	NATIVE	EXOTIC	POT SIZE	MATURE HEIGHT	SPREAD	SPACING	QTY
Tree										
Ba-in	<i>Banksia integrifolia</i>	Coastal banksia		Y		75lt	4-15m	4-6m	As Shown	2
Br-po	<i>Brachychiton populneus</i>	Kurrajong		Y		75lt	15m	5m	As Shown	1
Ca-ki	<i>Callistemon citrinus</i> 'Kings Park Special'	Kings Park Bottlebrush		Y		75lt	4m	2m	As Shown	2
Eu-an	<i>Eucalyptus angophoroides</i>	Apple Top Box	Y			75lt	20m	12m	As Shown	1
Eu-ca	<i>Eucalyptus caesia</i>	Silver Princess		Y		75lt	4-10m	3-8m	As Shown	1
Eu-gl	<i>Eucalyptus globulus</i>	Tasmanian blue gum		Y		75lt	25m	15m	As Shown	1
Fr-ra	<i>Fraxinus angustifolia</i> 'Raywood'	Fraxinus Raywood			Y	75lt	12m	9m	As Shown	2
Ma-pl	<i>Malus ioensis</i> 'Plena'	Crab Apple			Y	75lt	6m	4m	As Shown	4
Shrubs										
Ac-di	<i>Acer palmatum</i> 'Dissectum Purpureum'	Japanese Maple			Y	300mm	1.5-2m	1.5-2m	1.5m centres	6
Ac-bo	<i>Acacia boommanii</i>	Snowy River Wattle		Y		300mm	4.5m	2m	1.5m centres	19
At-nu	<i>Atriplex nummularia</i>	Old Man Saltbush	Y			300mm	1-2m	2-4m	1.5m centres	2
As-el	<i>Aspidistra elatior</i>	Cast Iron Plant				300mm	0.6-0.7m	0.6-1.5m	As shown	30
Ca-ki	<i>Callistemon viminalis</i> 'Kings park. Special'	Callistemon 'Kings Park Special'		Y		300mm	3-5m	2-4m	As shown	2
Ca-re	<i>Callistemon viminalis</i> 'Red Alert'	Weeping Bottlebrush		Y		300mm	prune to 2m	prune to 1m	0.8m centres	26
Co-al	<i>Correa alba</i>	White Correa	Y			300mm	1.5m	1m	1m centres	7
Da-mi	<i>Daviesia mimosoides</i>	Bacon & Eggs Pea Flower		Y		300mm	2m	1-2m	1.2m centres	15
Do-vi	<i>Dodonea viscosa</i>	Sticky Hop Bush	Y			300mm	2.5m	1.5m	1.2m centres	28
Ku-am	<i>Kunzea ambigua</i>	Tick Bush		Y		300mm	2.5m	2.5m	0.6m centres	10
Ph-th	<i>Photinia x fraseri</i> 'Thin Red™ 'NP01'	Photinia			Y	300mm	prune to 2m	prune to 0.6m	0.5m centres	72
Ph-re	<i>Photinia</i> 'Red Alert'	Christmas Berry			Y	300mm	prune to 2m	prune to 0.6m	0.5m centres	97
Pi-gr	<i>Pittosporum tenuifolium</i> 'Green Pillar'	Pittosporum 'Green Pillar'			Y	300mm	prune to 2m	prune to 1m	As shown	62
Pr-mi	<i>Prostanthera</i> 'Minty'	Native Mint Bush	Y*			300mm	1.5m	1m	0.8m centres	27
Rh-co	<i>Rhaphiolepis indica</i> 'Cosmic Pink'	Indian Hawthorn			Y	300mm	1-1.5m	1-1.5m	1m centres	25
Yu-fi	<i>Yucca filamentosa</i>	Adams Needle			Y	300mm	1.5m	1m	As shown	5
Groundcovers										
As-el	<i>Aspidistra elatior</i>	Cast Iron Plant			Y	140mm	0.6m	0.6-1.5m	6/m2	30
Ch-ap	<i>Chrysocephalum apiculatum</i>	Yellow Buttons		Y		140mm	0.3-1m	0.5-1.5m	6/m2	291
Di-ca	<i>Dianella caerulea</i>	Blue Flax Lily	Y			140mm	0.3m	0.4m	6/m2	120
Di-lr	<i>Dianella revoluta</i> 'Little Rev'	Little Rev Dianella		Y		140mm	0.55m	0.5m	6/m2	260
Di-re	<i>Dianella revoluta</i>	Spreading Flaxlily	Y			140mm	0.45m	0.2m	6/m2	264
Gr-gc	<i>Grevillea juniperina</i> 'Gold Cluster'	Gold Cluster Grevillea	Y*			140mm	0.3m	0.8-1m	2/m2	140
Lo-li	<i>Lomandra</i> 'Lime Tuff'	Lomandra Lime Tuff	Y			140mm	0.6m	0.5m	5/m2	278
Po-es	<i>Poa labillardierei</i>	Tussock Grass		Y		140mm	0.8m	1m	2/m2	180
Rh-af	<i>Rhagodia spinescens</i> 'Aussie Flat Bush'	Aussie Flat Bush	Y*			140mm	0.1-0.2m	1m	2/m2	70

\* Indigenous Cultivar

INTENT IMAGE



P1

NOTE

Copyright of Studio IZ Pty Ltd.  
Figured dimensions shall be taken in preference to scaling.  
The contractor shall check all dimensions on site before commencing work.

- Do not scale drawings, figured dimensions have preference over scaled dimensions. The contractor shall check all dimensions on site before commencing works.
- Any discrepancies must be reported immediately to the superintendent and project landscape architect for clarification and approval.
- All existing trees shown as retained to be protected as per arborist report and landscape specification.
- Refer to architect's drawings for final internal footprint, FFL of the proposed building.
- Refer to stormwater engineer's drawings for final location of OSD tanks, rainwater tanks, grate drain and pits, proposed crossfall and driveway levels.
- Locate and protect all underground services prior to any excavation.
- The drawing has been prepared by qualified landscape architect at Studio IZ Pty Ltd Kate Gong AILA #12247

C	18/03/2025	ISSUE FOR PART 5 DA
B	03/03/2025	ISSUE FOR PART 5 DA
A	29/02/2025	ISSUE FOR PART 5 DA
REV	DATE	DESCRIPTION

PRELIMINARY  
NOT FOR TENDER OR CONSTRUCTION

PROJECT:  
38-42 Gerathy Street, Goulburn  
NSW 2580

ARCHITECT:  
DEM

CLIENT:  
   
Homes NSW  
4 Parramatta Square (4PSQ)  
12 Darcy Street, Parramatta NSW 2150

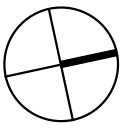
PROJECT CONTACT

STUDIO IZ

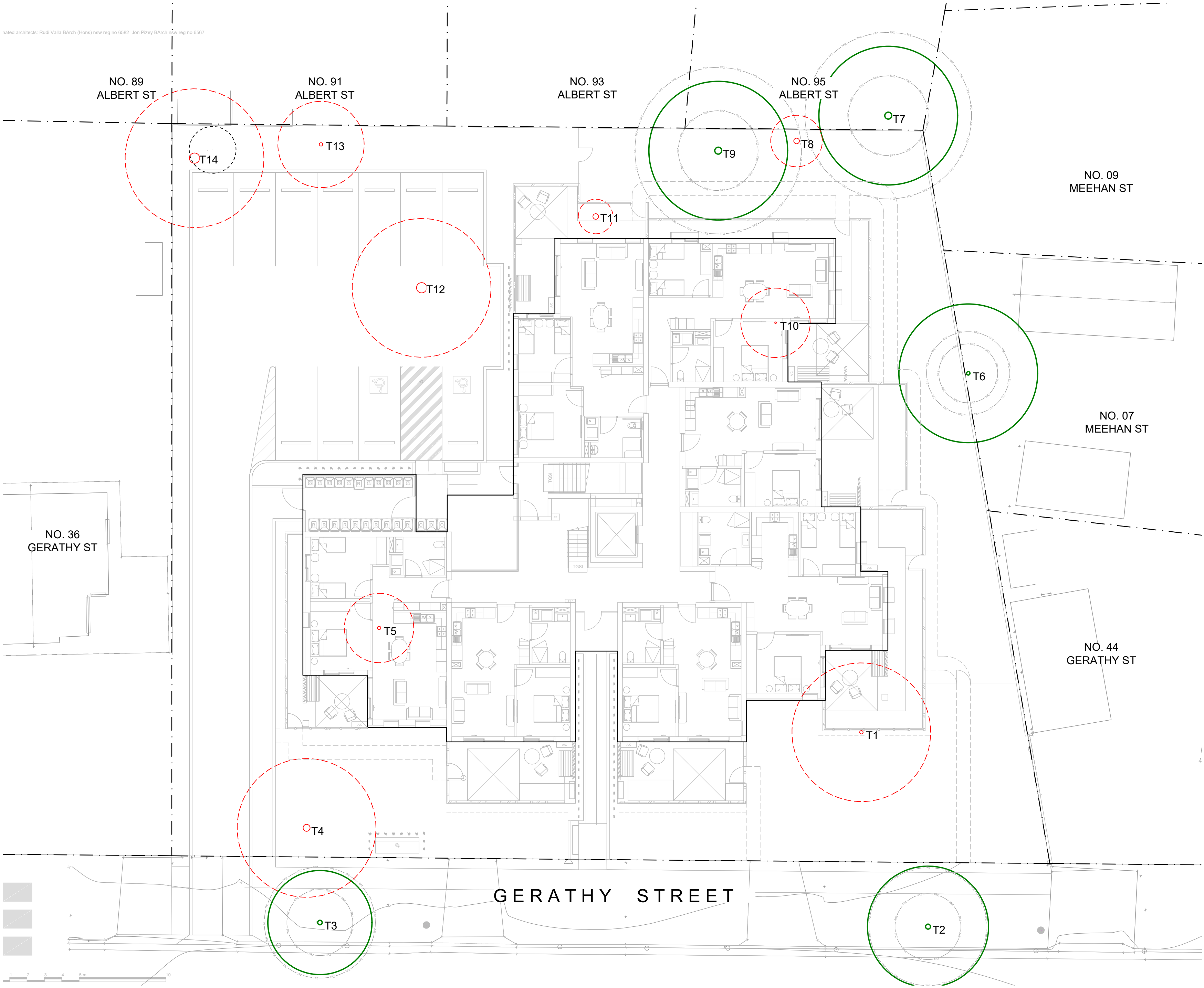
STUDIO IZ PTY LTD      ABN: 20 611 333 521  
TEL: +61 02 8004 6946 EMAIL: info@studioiz.com.au  
Clarend Towers, Suite 506, Level 5, Tower B/799 Pacific Hwy,  
Chatswood NSW 2067

APPROVED	DRAWN
KG	BW
DATE CREATED	PROJECT NO.
November 2024	LA241016

LEGEND & PLANTING  
SCHEDULE

SCALE	NORTH POINT
A1	
AS SHOWN	
DRAWING NO.	ISSUE
LA-001	C





EXISTING TREE SCHEDULE

ID	BOTANICAL NAME	COMMON NAME	SIGNIFICANCE	COMMENT
TREES TO BE RETAINED				
T2	<i>Fraxinus sp.</i>	Ash	High	Retain and protect within a Tree Protection Zone (TPZ) as per the Tree Protection Plan. – Road reserve specimen
T3	<i>Fraxinus sp.</i>	Ash	High	Retain and protect within a Tree Protection Zone (TPZ) as per the Tree Protection Plan. – Road reserve specimen
T6	<i>Cotoneaster franchetii</i>	Cotoneaster	High	Retain and protect within a Tree Protection Zone (TPZ) as per the Tree Protection Plan. – Neighbouring property specimen
T7	<i>Ligustrum lucidum</i>	Large-leaf Privet	Medium	Retain and protect within a Tree Protection Zone (TPZ) as per the Tree Protection Plan. – Neighbouring property specimen
T9	<i>Prunus x blireana</i>	Pink Flowering Blossom	High	Retain and protect within a Tree Protection Zone (TPZ) as per the Tree Protection Plan.
TREES TO BE REMOVED				
T1	<i>Acacia floribunda</i>	Gossamer Wattle	Medium	Remove and replace with new plantings as per Landscape Plan
T4	<i>Photinia glabra 'Robusta'</i>	Photinia	High	Remove and replace with new plantings as per Landscape Plan
T5	<i>Euonymus japonicus</i>	Japanese Spindle Tree	Medium	Remove and replace with new plantings as per Landscape Plan
T8	<i>Prunus x blireana</i>	Pink Flowering Blossom	Low	Remove and replace with new plantings as per Landscape Plan
T10	<i>Prunus sp.</i>	Flowering Cherry	Medium	Remove and replace with new plantings as per Landscape Plan
T11	<i>Prunus sp.</i>	Flowering Cherry	Medium	Remove and replace with new plantings as per Landscape Plan
T12	<i>Eucalyptus globulus</i>	Tasmanian Blue Gum	High	Remove and replace with new plantings as per Landscape Plan
T13	<i>Liquidambar formosana</i>	Chinese Liquidambar	Low	Remove and replace with new plantings as per Landscape Plan
T14	<i>Liquidambar formosana x3</i>	Chinese Liquidambar	Low	Remove and replace with new plantings as per Landscape Plan

NOTE:  
Tree heights and TPZ refer to Arboricultural impact assessment prepared by REDGUM Horticultural Arboriculture & Horticulture Consultants dated 20 January 2025.  
Allow to demolish all tree roots for trees to be demolished and dispose properly off site

- NOTE
- Copyright of Studio IZ Pty Ltd.  
Figured dimensions shall be taken in preference to scaling.  
The contractor shall check all dimensions on site before commencing work.
- Do not scale drawings, figured dimensions have preference over scaled dimensions. The contractor shall check all dimensions on site before commencing work.
  - Any discrepancies must be reported immediately to the superintendent and project landscape architect for clarification and approval.
  - All existing trees shown as retained to be protected as per arborist report and landscape specification.
  - Refer to architect's drawings for final internal footprint, FFL of the proposed building.
  - Refer to stormwater engineer's drawings for final location of OSD tanks, rainwater tanks, grate drain and pits, proposed crossfall and driveway levels.
  - Locate and protect all underground services prior to any excavation.
  - The drawing has been prepared by qualified landscape architect at Studio IZ Pty Ltd Kate Gong AILA #12247

C	18/03/2025	ISSUE FOR PART 5 DA
B	03/03/2025	ISSUE FOR PART 5 DA
A	29/02/2025	ISSUE FOR PART 5 DA
REV	DATE	DESCRIPTION

PRELIMINARY  
NOT FOR TENDER OR CONSTRUCTION

PROJECT:  
38-42 Gerathy Street, Goulburn  
NSW 2580

ARCHITECT:  
DEM

CLIENT:  
   
Homes NSW  
4 Parramatta Square (4PSQ)  
12 Darcy Street, Parramatta NSW 2150

PROJECT CONTACT

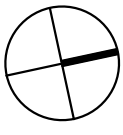
STUDIO IZ

STUDIO IZ PTY LTD ABN: 20 611 333 521  
TEL: +61 02 8004 6946 EMAIL: info@studioiz.com.au  
Citiad Towers, Suite 506, Level 5, Tower B/799 Pacific Hwy,  
Chateau NSW 2067

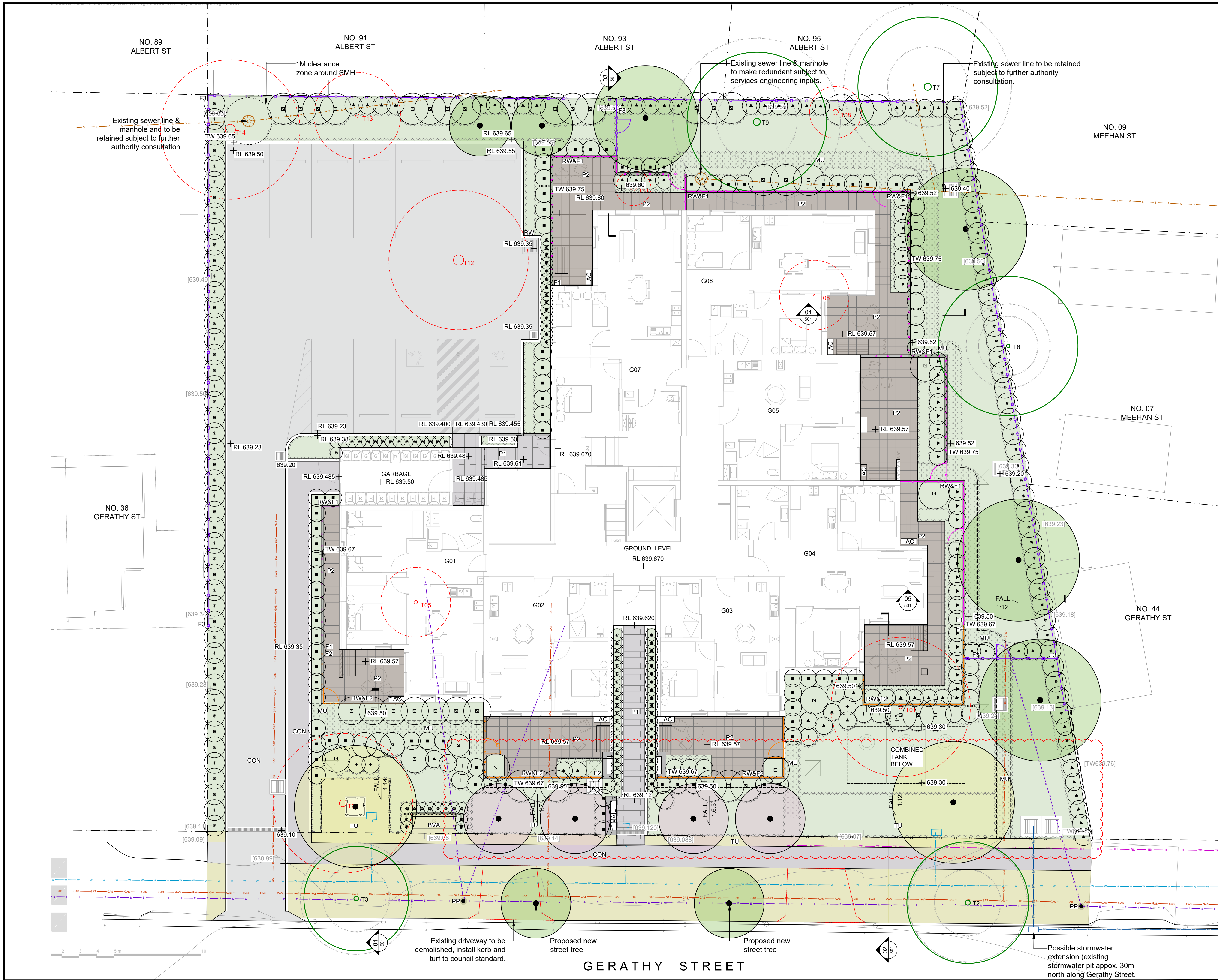
APPROVED	DRAWN
KG	BW
DATE CREATED	PROJECT NO.
November 2024	LA241016

DRAWING TITLE

EXISTING TREE PLAN

SCALE	NORTH POINT
A1	
1:200	
DRAWING NO.	ISSUE
LA-002	C





- NOTE
- Copyright of Studio IZ Pty Ltd.  
Figured dimensions shall be taken in preference to scaling.  
The contractor shall check all dimensions on site before commencing work.
- Do not scale drawings, figured dimensions have preference over scaled dimensions. The contractor shall check all dimensions on site before commencing work.
  - Any discrepancies must be reported immediately to the superintendent and project landscape architect for clarification and approval.
  - All existing trees shown as retained to be protected as per arborist report and landscape specification.
  - Refer to architect's drawings for final internal footprint, FFL of the proposed building.
  - Refer to stormwater engineer's drawings for final location of OSD tanks, rainwater tanks, grate drain and pits, proposed crossfall and driveway levels.
  - Locate and protect all underground services prior to any excavation.
  - The drawing has been prepared by qualified landscape architect at Studio IZ Pty Ltd Kate Gong AILA #12247

REV	DATE	DESCRIPTION
C	18/03/2025	ISSUE FOR PART 5 DA
B	03/03/2025	ISSUE FOR PART 5 DA
A	29/02/2025	ISSUE FOR PART 5 DA

**PRELIMINARY**  
NOT FOR TENDER OR CONSTRUCTION

PROJECT:  
38-42 Gerathy Street, Goulburn  
NSW 2580

ARCHITECT:  
DEM

CLIENT:  
   
Homes NSW  
4 Parramatta Square (4PSQ)  
12 Darcy Street, Parramatta NSW 2150

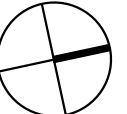
PROJECT CONTACT

**STUDIO IZ**

STUDIO IZ PTY LTD ABN: 20 611 333 521  
TEL: +61 02 8004 6946 EMAIL: info@studioiz.com.au  
Clarendon Towers, Suite 506, Level 5, Tower B/799 Pacific Hwy,  
Chatswood NSW 2067

APPROVED	DRAWN
KG	BW
DATE CREATED	PROJECT NO.
November 2024	LA241016

DRAWING TITLE  
**GENERAL ARRANGEMENT  
PLAN**

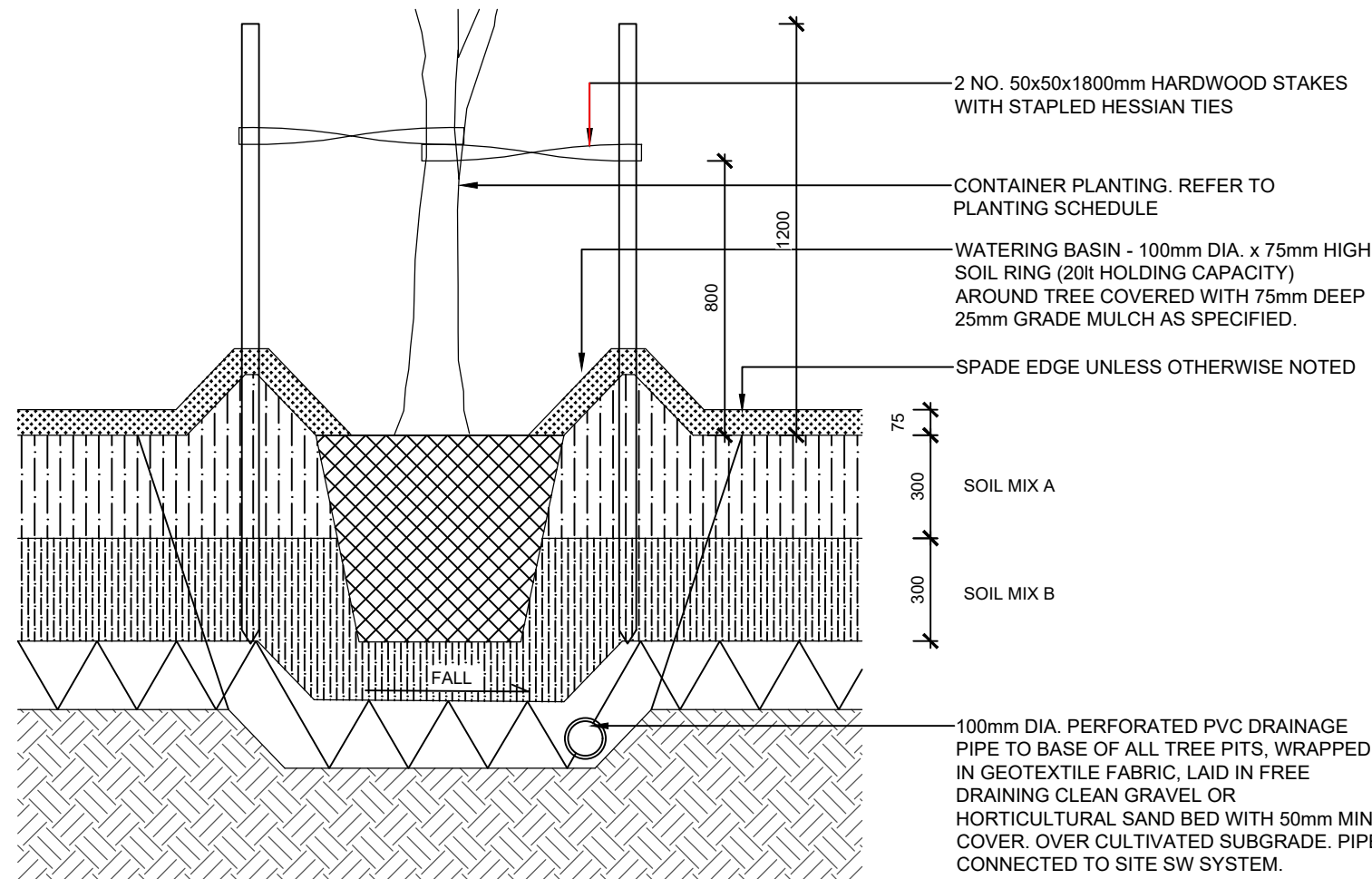
SCALE	NORTH POINT
A1 1:100	

DRAWING NO.	ISSUE
<b>LA-201</b>	<b>C</b>

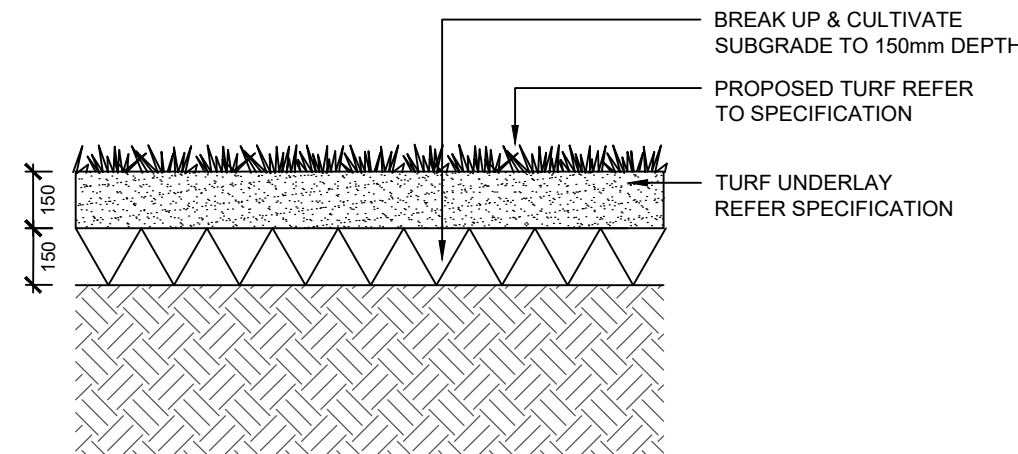




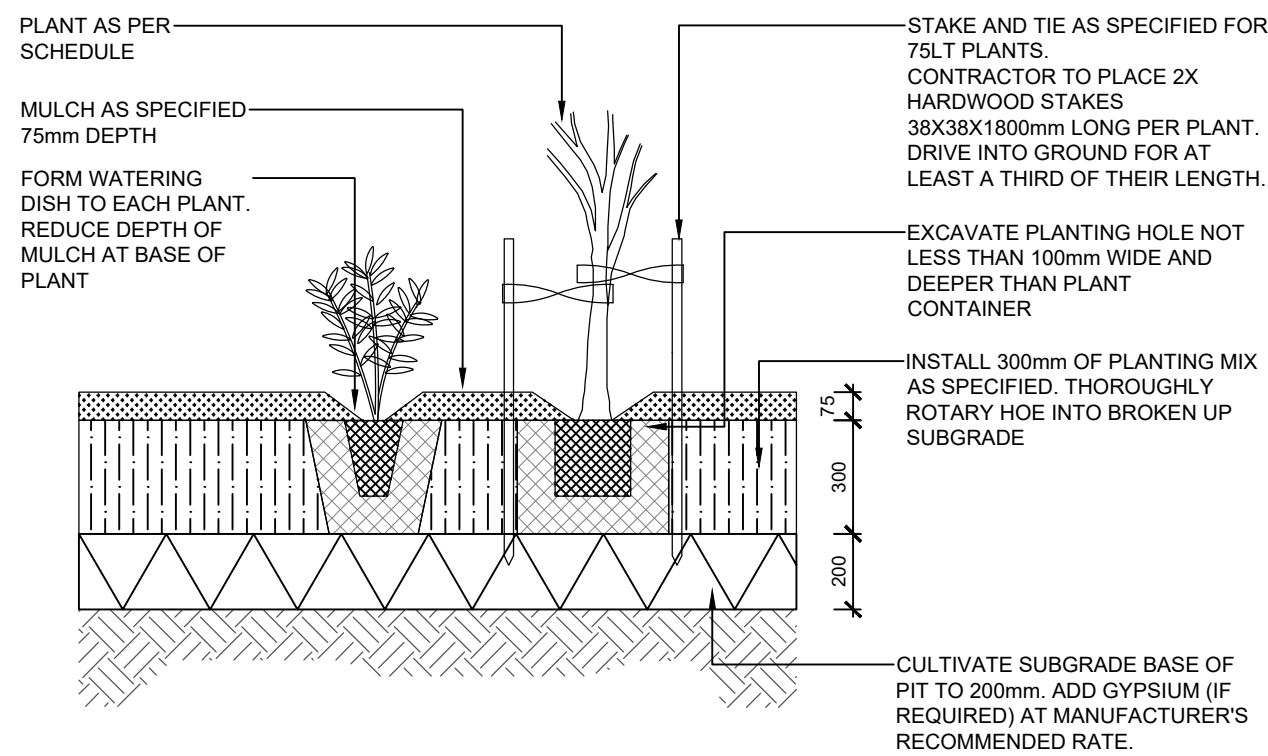




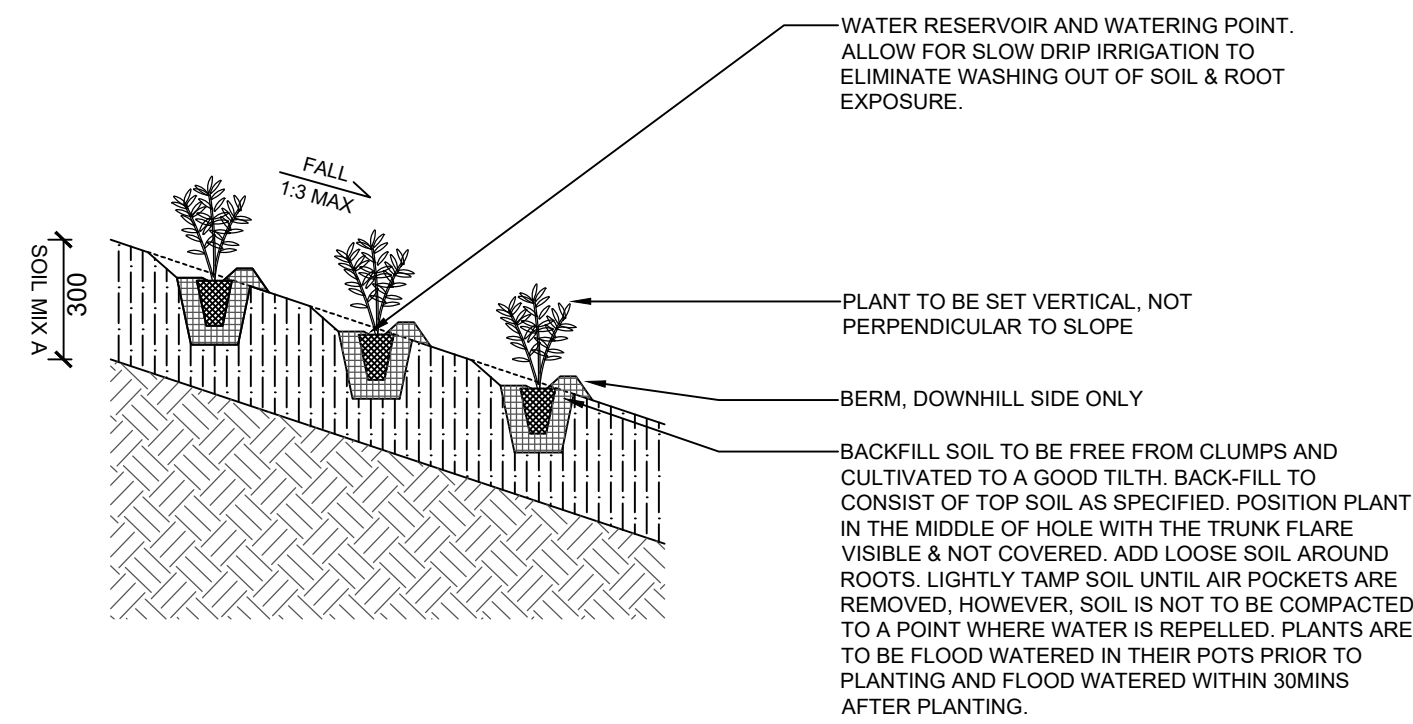
01 TREE PLANTING  
TYPICAL DETAIL 1:20



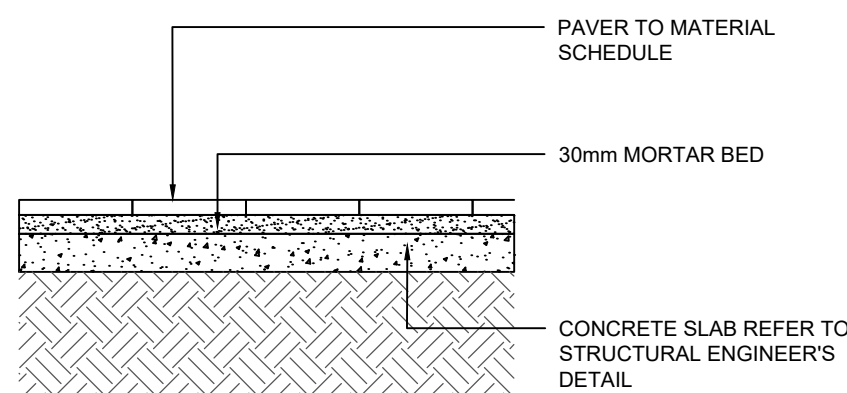
02 TURF (TU)  
TYPICAL DETAIL 1:20



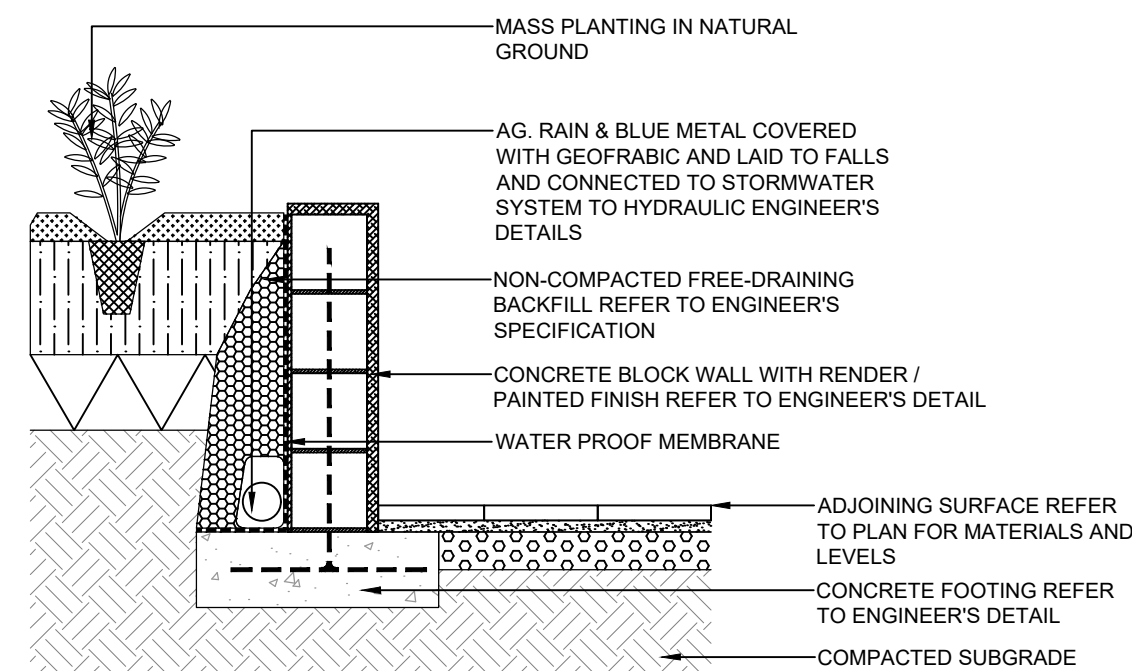
03 MASS PLANTING  
TYPICAL DETAIL 1:20



04 EMBANKMENT PLANTING  
TYPICAL DETAIL 1:20



05 UNIT PAVING  
TYPICAL SCALE 1:20



06 CONCRETE BLOCK RETAINING WALL  
TYPICAL DETAIL 1:20

- NOTE
- Copyright of Studio IZ Pty Ltd.  
Figured dimensions shall be taken in preference to scaling.  
The contractor shall check all dimensions on site before commencing work.
- Do not scale drawings, figured dimensions have preference over scaled dimensions. The contractor shall check all dimensions on site before commencing work.
  - Any discrepancies must be reported immediately to the superintendent and project landscape architect for clarification and approval.
  - All existing trees shown as retained to be protected as per arborist report and landscape specification.
  - Refer to architect's drawings for final internal footprint, FFL of the proposed building.
  - Refer to stormwater engineer's drawings for final location of OSD tanks, rainwater tanks, grate drain and pits, proposed crossfall and driveway levels.
  - Locate and protect all underground services prior to any excavation.
  - The drawing has been prepared by qualified landscape architect at Studio IZ Pty Ltd Kate Gong AILA #12247

C	18/03/2025	ISSUE FOR PART 5 DA
B	03/03/2025	ISSUE FOR PART 5 DA
A	29/02/2025	ISSUE FOR PART 5 DA
REV	DATE	DESCRIPTION

**PRELIMINARY**  
NOT FOR TENDER OR CONSTRUCTION

PROJECT:  
**38-42 Gerathy Street, Goulburn NSW 2580**

ARCHITECT:  
**DEM**

CLIENT:  
**NSW GOVERNMENT**  
**Homes NSW**  
**4 Parramatta Square (4PSQ)**  
**12 Darcy Street, Parramatta NSW 2150**

PROJECT CONTACT

**STUDIO IZ**

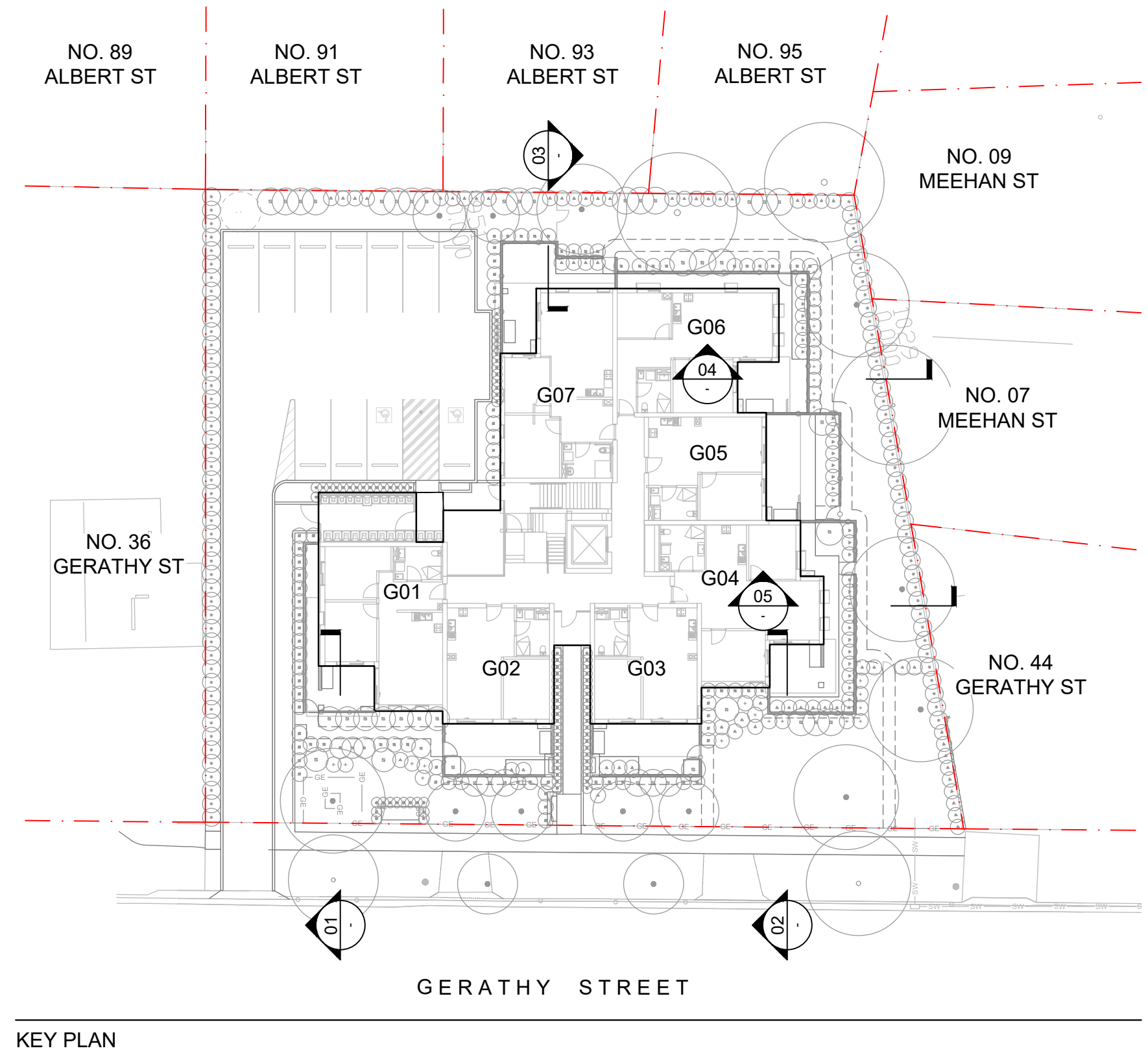
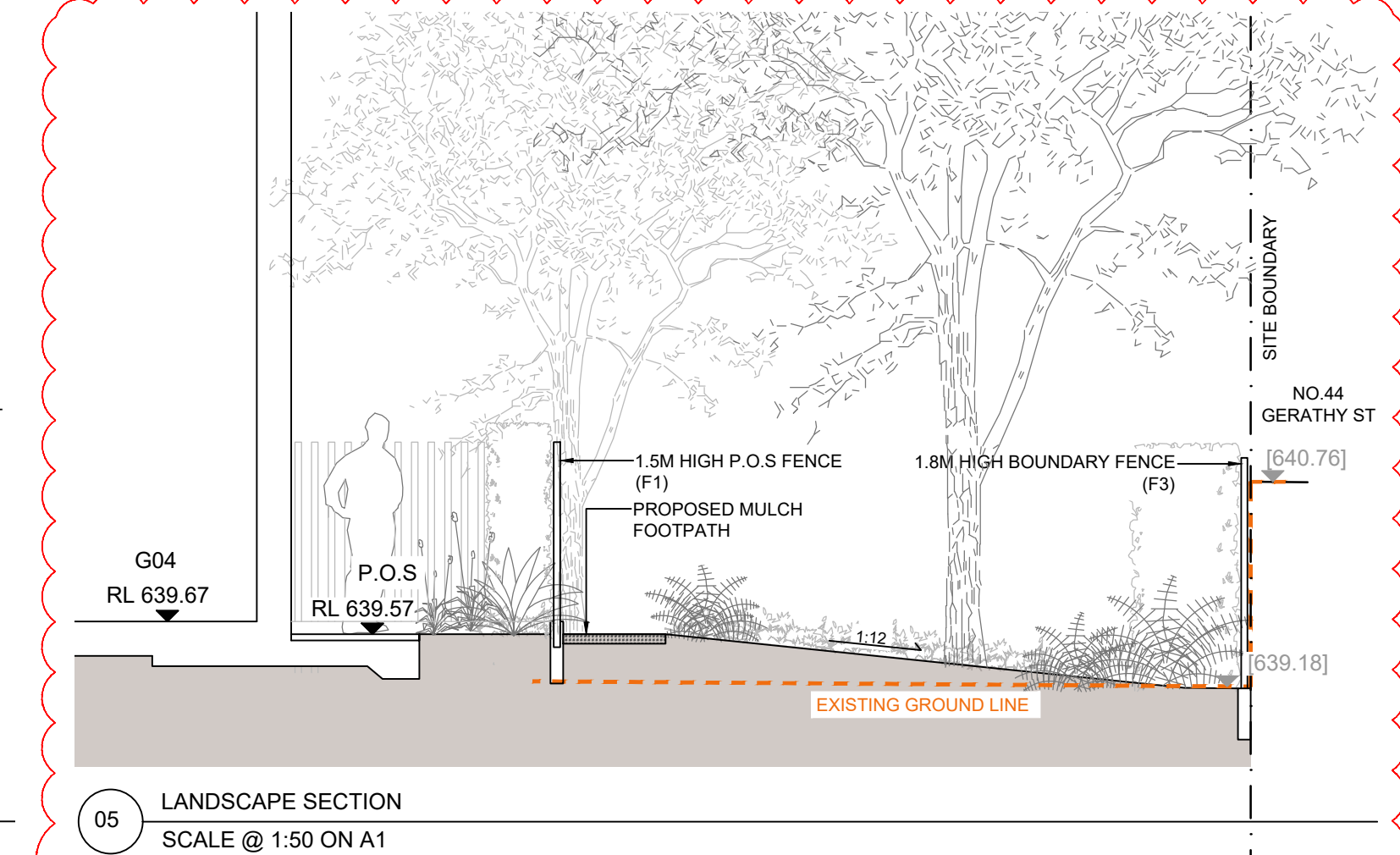
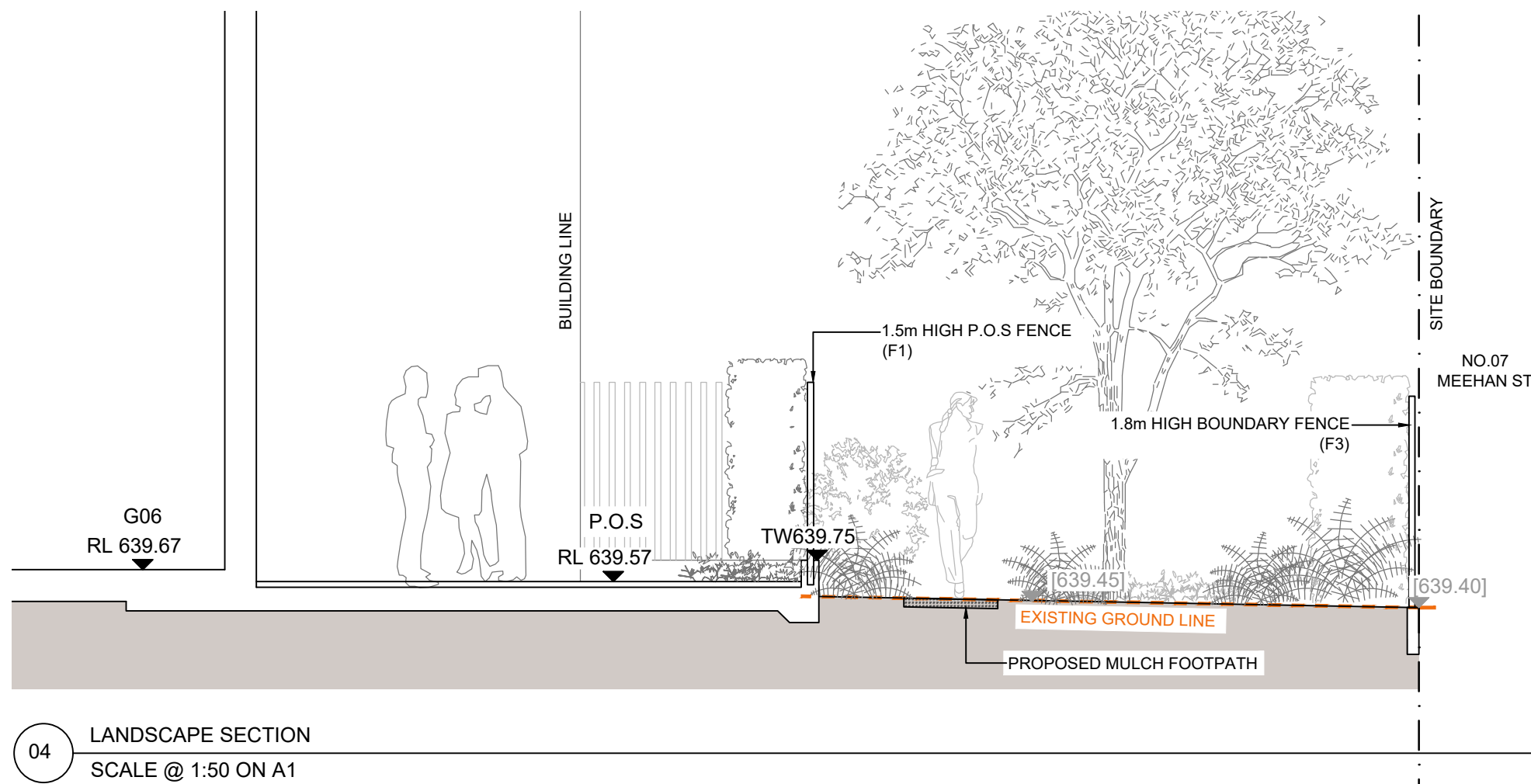
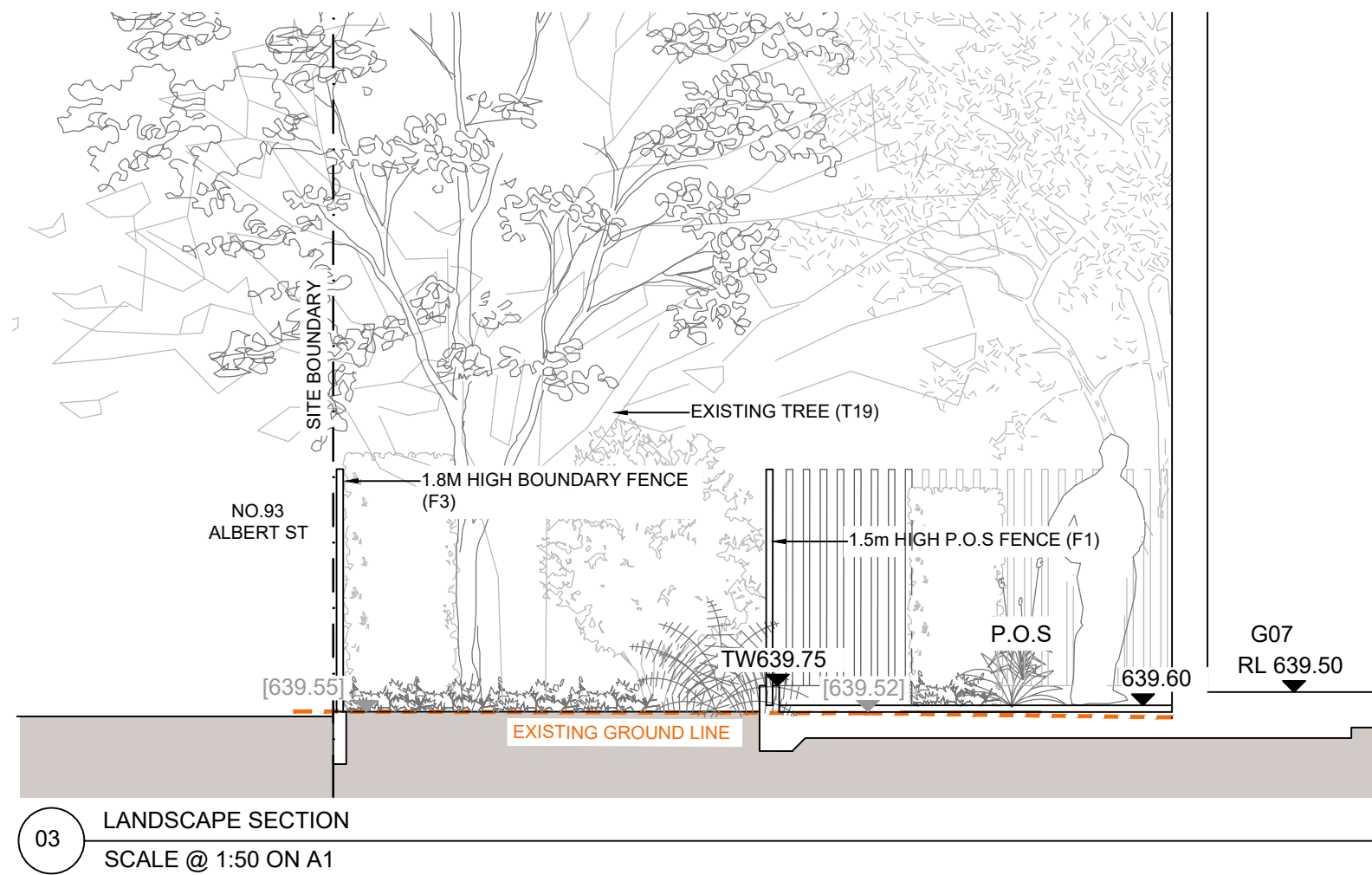
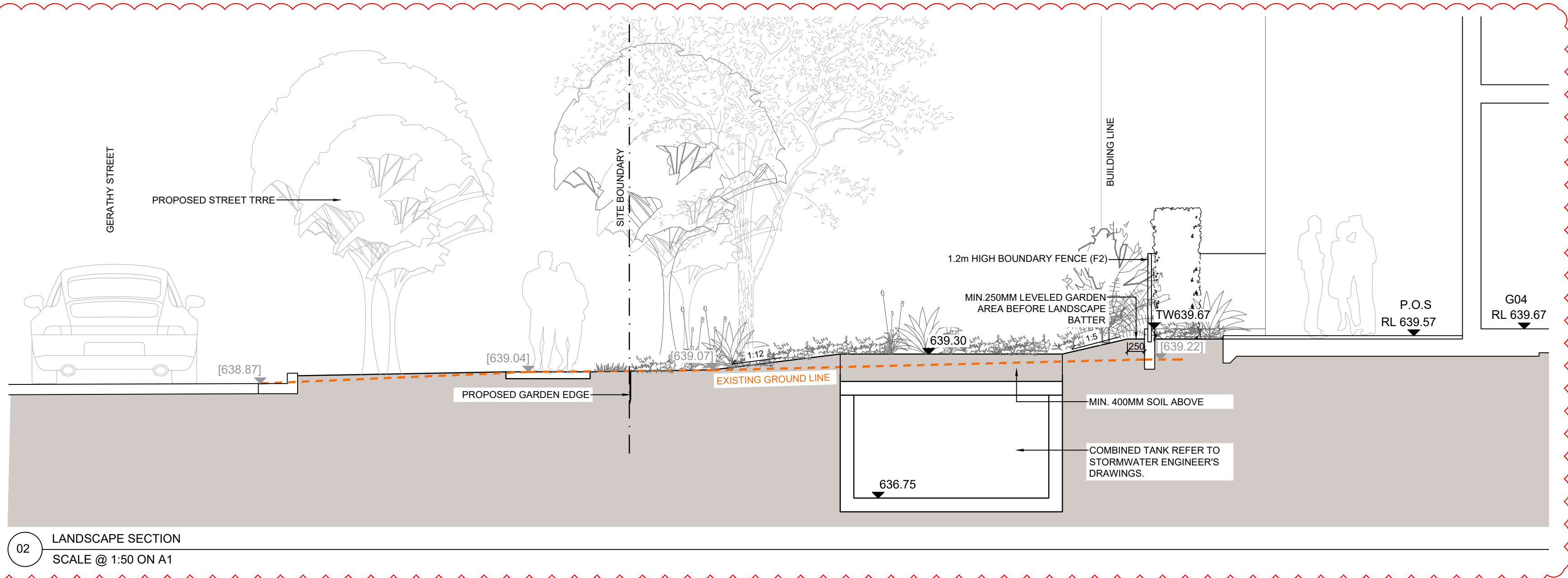
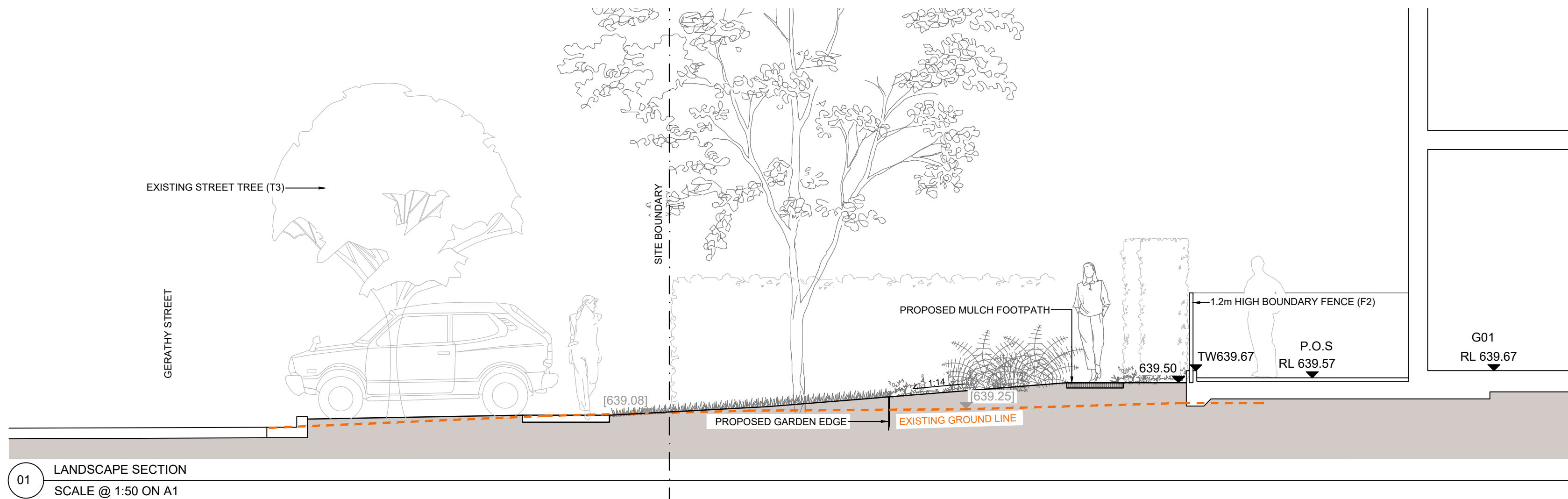
STUDIO IZ PTY LTD ABN: 20 611 333 521  
TEL: +61 02 8004 6946 EMAIL: info@studioiz.com.au  
Clarendon Towers, Suite 906, Level 9, Tower B/799 Pacific Hwy, Chateau NSW 2067

APPROVED KG	DRAWN BW
DATE CREATED November 2024	PROJECT NO. LA241016

DRAWING TITLE  
**TYPICAL DETAILS**

SCALE A1 1:100	NORTH POINT 
DRAWING NO. <b>LA-501</b>	ISSUE <b>C</b>





NOTE

Copyright of Studio IZ Pty Ltd.  
Figured dimensions shall be taken in preference to scaling.  
The contractor shall check all dimensions on site before commencing work.

- Do not scale drawings, figured dimensions have preference over scaled dimensions. The contractor shall check all dimensions on site before commencing work.
- Any discrepancies must be reported immediately to the superintendent and project landscape architect for clarification and approval.
- All existing trees shown as retained to be protected as per arborist report and landscape specification.
- Refer to architect's drawings for final internal footprint, FFL of the proposed building.
- Refer to stormwater engineer's drawings for final location of OSD tanks, rainwater tanks, grate drain and pits, proposed crossfall and driveway levels.
- Locate and protect all underground services prior to any excavation.
- The drawing has been prepared by qualified landscape architect at Studio IZ Pty Ltd Kate Gong AILA #12247

REV	DATE	DESCRIPTION
C	18/03/2025	ISSUE FOR PART 5 DA
B	03/03/2025	ISSUE FOR PART 5 DA
A	29/02/2025	ISSUE FOR PART 5 DA

**PRELIMINARY**  
NOT FOR TENDER OR CONSTRUCTION

PROJECT:  
38-42 Gerathy Street, Goulburn NSW 2580

ARCHITECT:  
DEM

CLIENT:  
Homes NSW  
4 Parramatta Square (4PSQ)  
12 Darcy Street, Parramatta NSW 2150

PROJECT CONTACT

**STUDIO IZ**

STUDIO IZ PTY LTD ABN: 20 611 333 521  
TEL: +61 02 8004 6946 EMAIL: info@studioiz.com.au  
Clarend Towers, Suite 806, Level 8, Tower B/799 Pacific Hwy, Chateau NSW 2067

APPROVED KG	DRAWN BW
DATE CREATED November 2024	PROJECT NO. LA241016
DRAWING TITLE <b>LANDSCAPE SECTION</b>	
SCALE A1 1:50	NORTH POINT 
DRAWING NO. <b>LA-601</b>	ISSUE <b>C</b>



